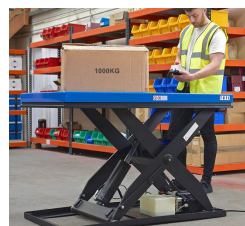
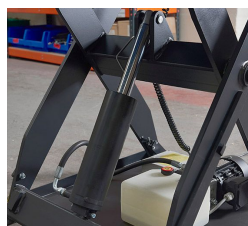


OPERATING INSTRUCTIONS



NOTE: The owner and user
MUST read and understand
these instructions

This lift table is made of high quality steel and is designed to give a durable, reliable and easy to use. For your safety and correct operation, please carefully read this instruction and warnings on the lift table before using it.

1. SPECIFICATIONS

Type	HIW1.0EU	HIW2.0EU
Capacity	500 kg	1000 kg
Max. height	1010 mm	1010 mm
Min. height	190 mm	190 mm
Dimension of the	1300 x 800 mm	1300 x 800 mm
Lifting speed	15 s	26 s
Lower speed	13 s	20 s
Pump electric	3 l/min	3 l/min
Oil tank	2 l	2 l
Pump station	AC3 x 380V, 750W	AC3 x 380V, 750W
Weight	160 kg	220 kg
Type	HIW4.0EU	HIW3.0EU
Capacity	2000 kg	3000 kg
Max. height	1010 mm	1020 mm
Min. height	190 mm	220 mm
Dimension of the	1300 x 800 mm	1300 x 800 mm
Lifting speed	40 s	26 s
Lower speed	30 s	22 s
Pump electric	3 l/min	5 l/min
Oil tank	3 l	3 l
Pump station	AC3 x 380V, 750W	AC3 x 380V, 1500W
Weight	280 kg	320 kg

2. SAFETY GUIDANCE

- 2.1 Operator should read all warning signs on the truck and instructions here before
- 2.2 Do not put foot and hand under the scissors, injury could happen.
- 2.3 Do not enter under table.
- 2.4 Do not overload.
- 2.5 Do not use it on slope, lift table may become uncontrollable and create danger.
- 2.6 Do not lift persons. People could fall down and suffer severe injury.
- 2.7 Do not side or end load. Load must be distributed on at least 80% of the table area.
- 2.8 The table should be maintained by the professional operator,
- 2.9 Keep watching the condition of load, stop operating lift table if load becomes
- 2.10 Check and maintain the lift table regularly.
- 2.11 Do not use the lift table continuously, the pump station would be damaged.
- 2.12 Stop operating the lift table if the temperature of the oil is too high.
- 2.13 The table should be lowered to the bottom if the lift table is not used.

3. OPERATING GUIDANCE

3.1 EMERGENCY SWITCH

When you press down this switch, it will switch off the power, and then you turn it clockwise, it will switch on the power

3.2 LIFTING SWITCH

When you press down this switch, the table will lift; when you loose your hand, the table will stop lifting.

4. MAINTENANCE

4.1 HYDRAULIC OIL

Please check the oil level every six months. The oil can be hydraulic oil: ISO VG 32(GB11118-89), its viscosity should be 32cSt at 40, total volume is about 4.0lt.

4.2 DAILY CHECK AND MAINTENANCE

It is necessary to check the truck daily. Special attention should be paid to the rollers, the axles, as thread, rags, etc., it may block the rollers; the scissors and the table should be checked, they may be deformed; the table should be unloaded and lowered in the lowest position when the job is over.

4.3 LUBRICATION

Use motor oil or grease to lubricate all movable parts.

5. TROUBLESHOOTING

Trouble	Clause	Fixing methods
The table can not be up the max. height	- The hydraulic oil is not enough - The position of the travel	- Pour in the oil - Adjust the position of
The table can not lift.	- Without hydraulic oil. - Safety valve has no enough pressure.	- Pour in the oil - Adjust the safety valve
The motor can not run	- The piston rod or cylinder is deformed resulting from partial loading slanting to one side or over-loading. - The fork was kept in the high position for long time, which	- Replace the piston rod or cylinder with new one - Keeping the fork in the lowest position if not using, and pay more attention to lubricate the piston rod. - Replace with new one
The table cannot descend	- The piston rod or cylinder is deformed resulting from partial loading slanting to one side or over-loading. - The fork was kept in the high position for long time, which	- Replace the piston rod or cylinder with new one - Keeping the fork in the lowest position if not using, and pay more attention to lubricate the piston rod. - Replace with new one
Leaks	- Sealing parts worn or damaged. - Some parts cracked	- Replace with new one - Replace with new one
The fork descends without the release valve worked	- The impurities in the oil cause the release valve to be unable to close tight. - Sealing parts worn or	- Replace with new oil - Replace with new one - Replace with new one

Note: Do not attempt to repair the truck unless you are trained and authorized.

Attention:
Environmentally hazardous waste, such as batteries and electronics, will have a negative effect on the environment, or health, if handled incorrectly.

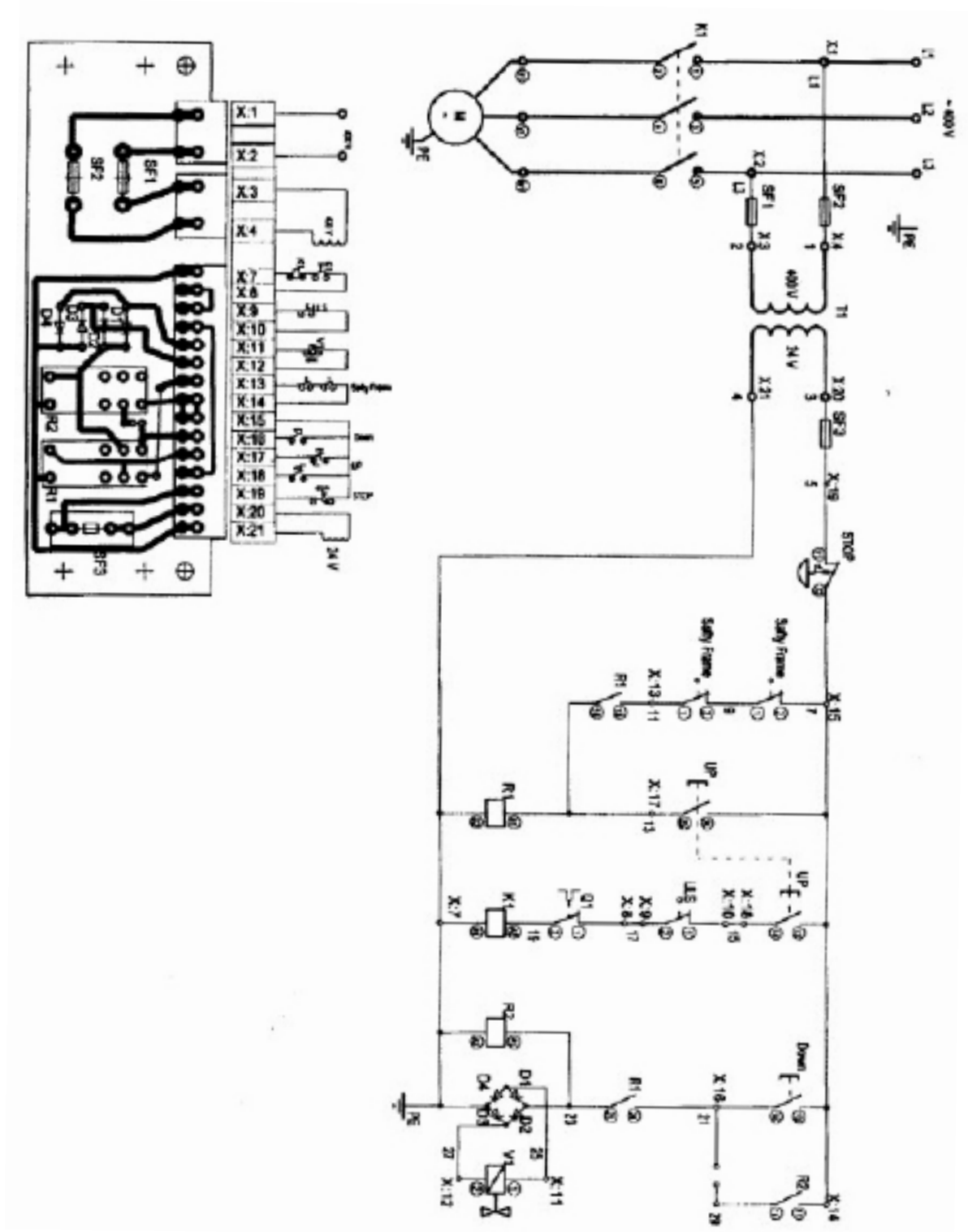
The waste packages should be sorted and put into solid dustbins according to the materials and be collected disposal by local special environment protection bureau. To avoid pollution, it's forbidden to throw away the wastes randomly.

To avoid leaking during the use of the products, the user should prepare some absorbable materials (scraps of wooden or dry duster cloth) to absorb the leaking oil in time. To avoid second pollution to the environment, the used absorbable materials should be handed in to special departments in terms of local authorities.

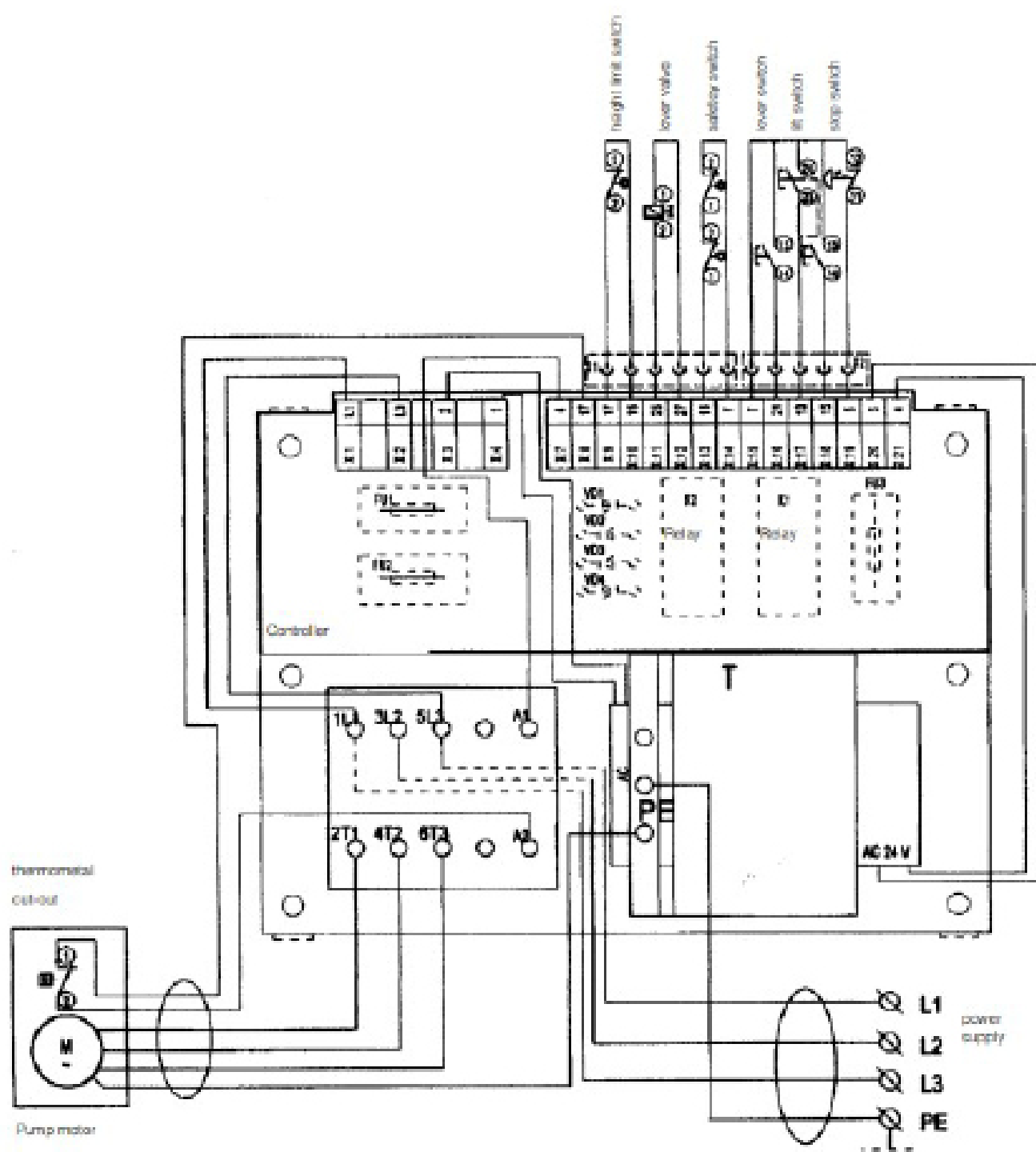
Note:
All of the information reported herein is based on data available at the moment

6. MAINTENANCE

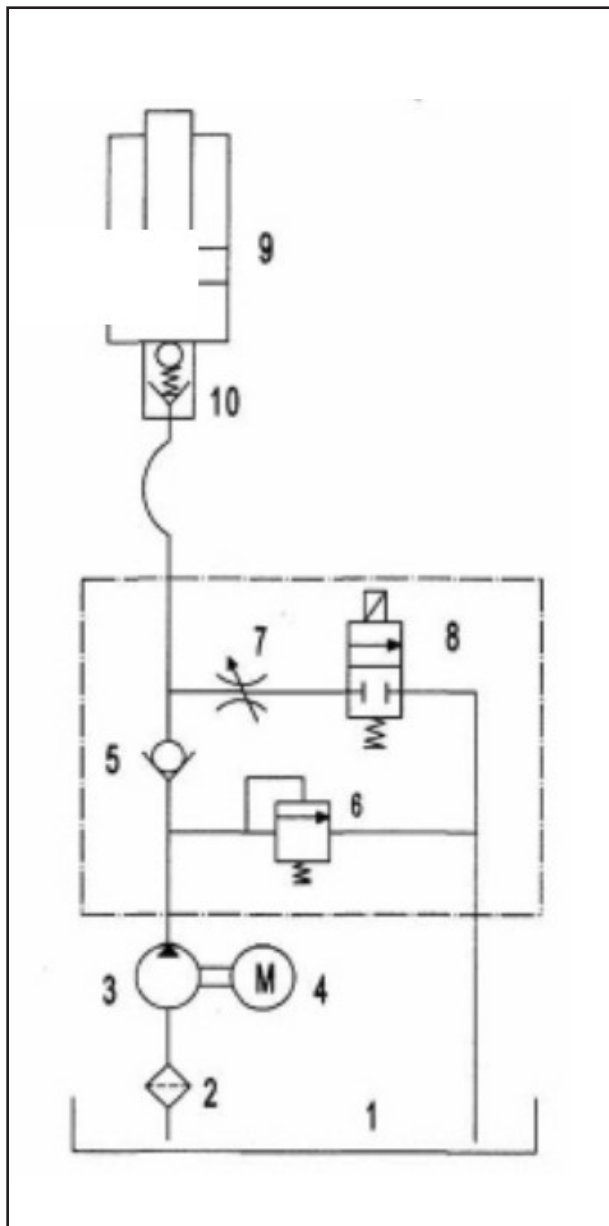
6.1 CIRCUIT DIAGRAM



6.2 CONNECTION DIAGRAM

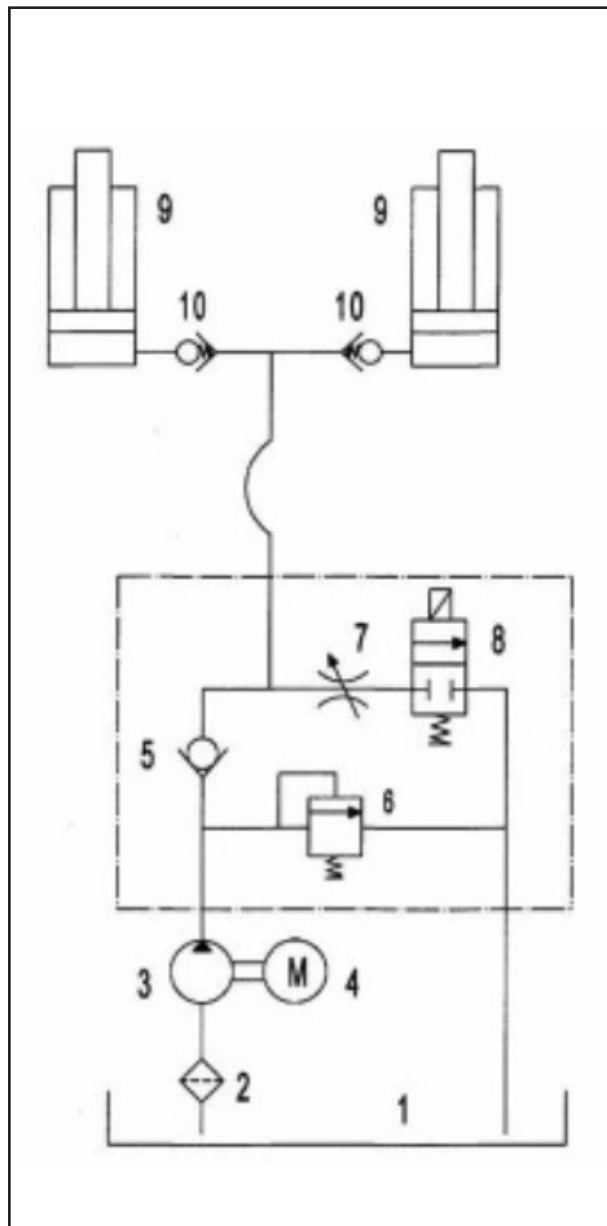


7. HYDRAULIC SYSTEM



HYDRAULIC SYSTEM

- 1. Tank
- 2. Filter
- 3. Pump
- 4. Motor
- 5. Check Valve
- 6. Relief Valve
- 7. Trottle Valve
- 8. Solenoid Valve
- 9. Cylinder
- 10. Fuse Valve



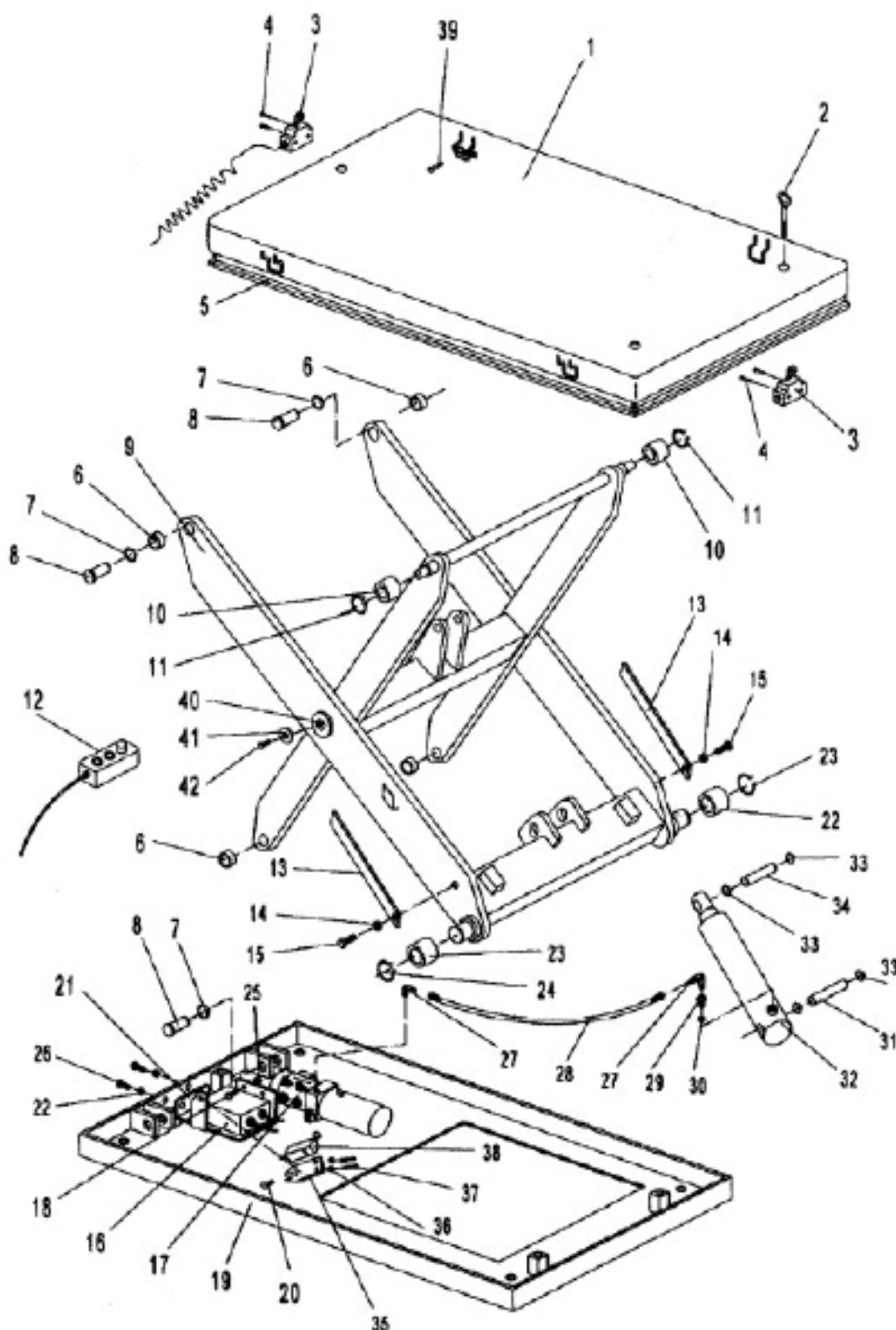
HYDRAULIC SYSTEM

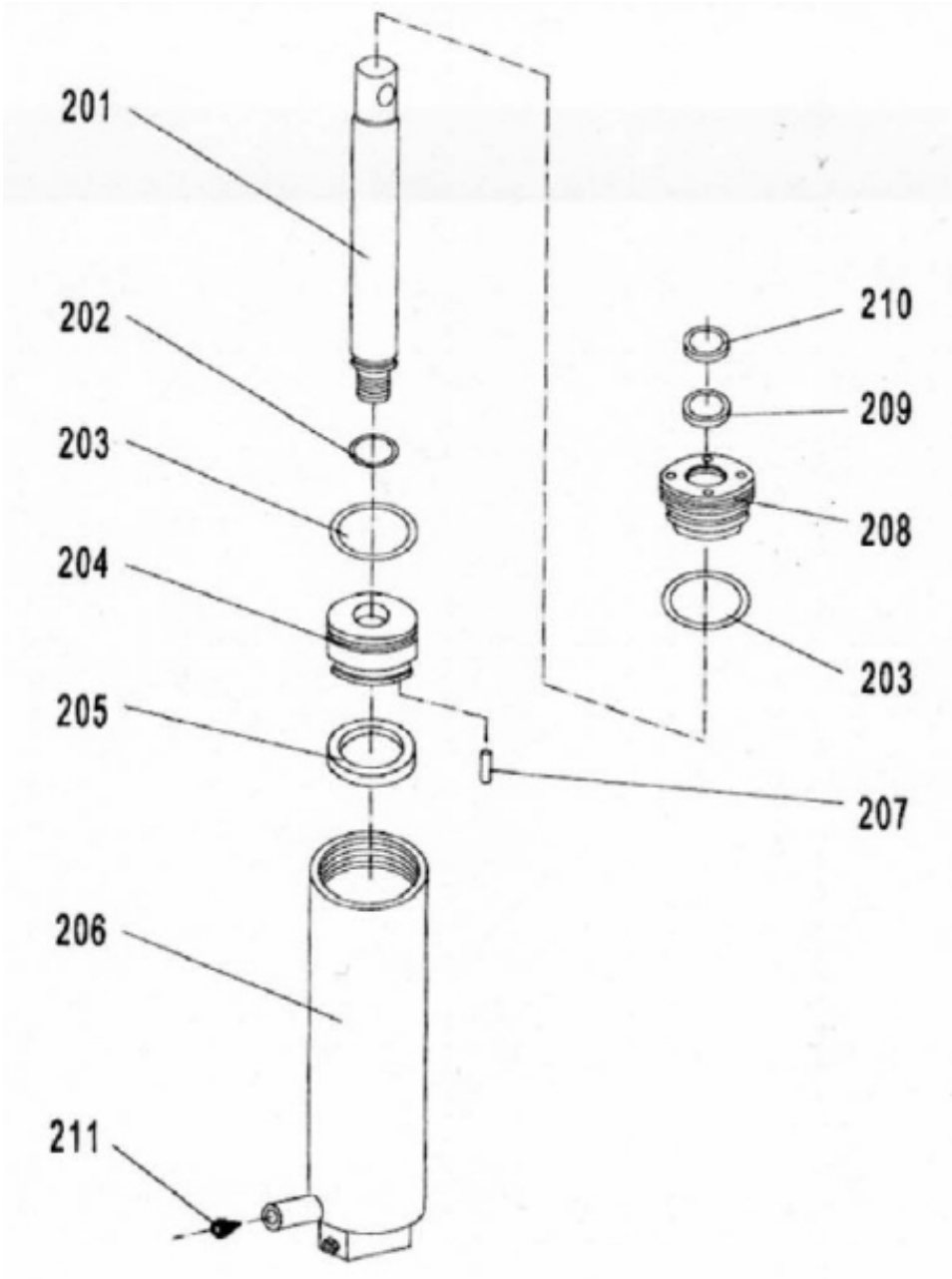
- 1. Tank
- 2. Filter
- 3. Pump
- 4. Motor
- 5. Check Valve
- 6. Relief Valve
- 7. Trottle Valve
- 8. Solenoid Valve
- 9. Cylinder
- 10. Fuse Valve

8. PARTS LIST

8.1 HIW1.0EU (1000LBS/500KG)

No	Description	Qty.
1	Table	1
2	Bolt	3
3	Microswitch	2
4	Bolt	4
5	Safety Border	1
6	Bushing	4
7	Retaining Ring	4
8	Shaft	4
9	Fork Arm	1
10	Roller	2
11	Retaining Ring	2
12	Control Switch	1
13	Support Plank	2
14	Nut	2
15	Screw	2
16	Chopper	1
17	Pump	1
18	Screw	4
19	Bottom Plank	1
20	Bolt	1
21	Connect Plank	1
22	Nut	2
23	Roller	2
24	Retaining Ring	2
25	Nut	4
26	Screw	2
27	90° Curve	2
28	Pipe	1
29	Reduction	1
30	Seal Washer	1
31	Shaft	1
32	Cylinder	1
33	Retaining Ring	4
34	Shaft	1
35	Plank	1
36	Nut	2
37	Bolt	2
38	Microswitch	1
39	Bolt	4
40	Shaft	1
41	Washer	2
42	Screw	2





PARTS LIST OF THE CYCLINDER OF HIW2.0EU (2000LBS/1000KG)

No.	Description	Qty.
201	Piston rod	1
202	O ring	1
203	O ring	2
204	Piston	1
205	Y-Seal ring	1

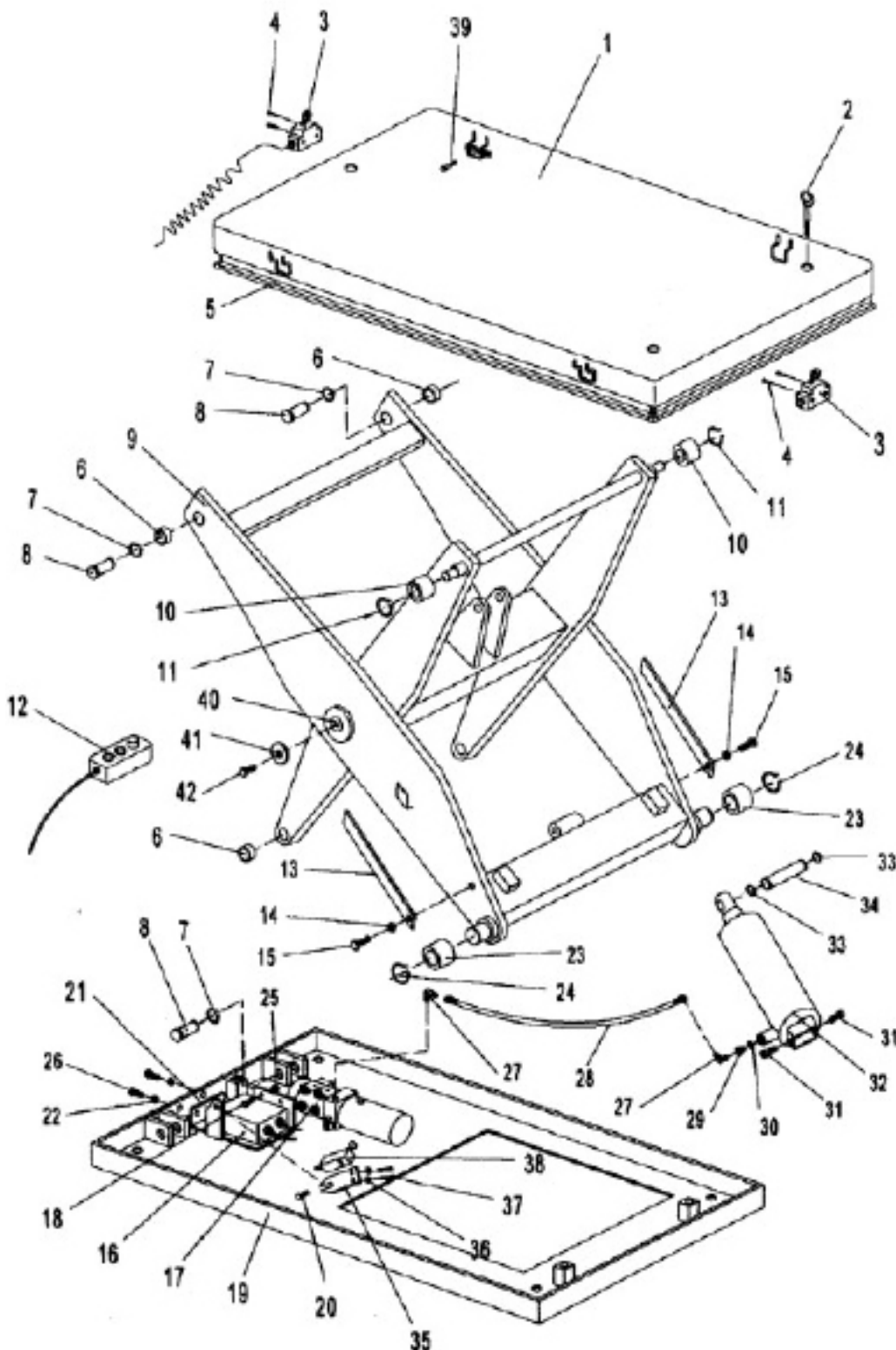
206	Housing	1
207	Pin	1
208	Cylinder Cap	1
209	Y-Seal ring	1
210	Dust ring	1
211	Safety Valve	1

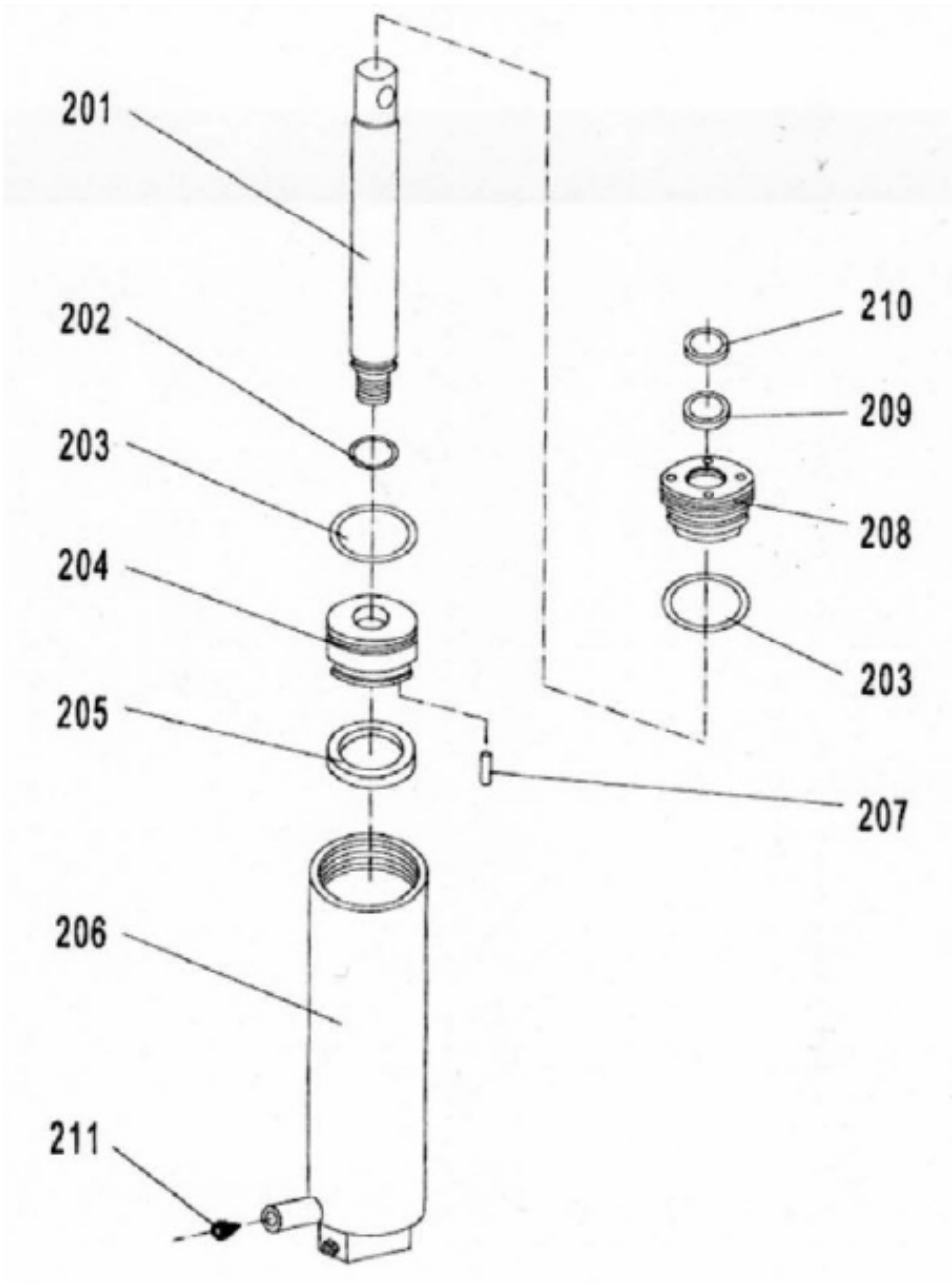
PARTS LIST - 1000KG



8.2 HIW2.0EU (2000 LBS / 1000KG)

No	Description	Qty.
1	Table	1
2	Bolt	3
3	Microswitch	2
4	Bolt	4
5	Safety Border	1
6	Bushing	4
7	Retaining Ring	4
8	Shaft	4
9	Fork Arm	1
10	Roller	2
11	Retaining Ring	2
12	Control Switch	1
13	Support Plank	2
14	Nut	2
15	Screw	2
16	Chopper	1
17	Pump	1
18	Screw	4
19	Bottom Plank	1
20	Bolt	1
21	Connect Plank	1
22	Nut	2
23	Roller	2
24	Retaining Ring	2
25	Nut	4
26	Screw	2
27	90° Curve	2
28	Hose	1
29	Reduction	1
30	Seal Washer	1
31	Screw	2
32	Cylinder	1
33	Retaining Ring	4
34	Shaft	1
35	Plank	1
36	Nut	2
37	Bolt	2
38	Microswitch	1
39	Bolt	4
40	Shaft	1
41	Washer	2
42	Screw	2





PARTS LIST OF THE CYCLINDER OF HIW2.0EU
(2000LBS/1000KG)

No.	Description	Qty.
201	Piston rod	1
202	O ring	1
203	O ring	2
204	Piston	1
205	Y-Seal ring	1

206	Housing	1
207	Pin	1
208	Cylinder Cap	1
209	Y-Seal ring	1
210	Dust ring	1
211	Safety Valve	1